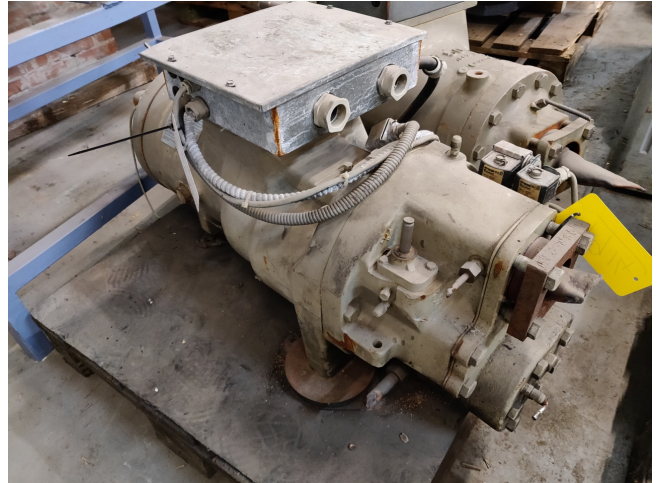


# Trane CHHN050DKD0N060A

## Specifications

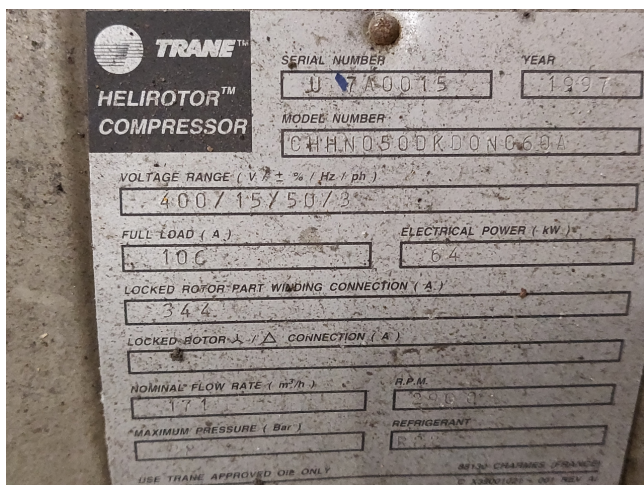
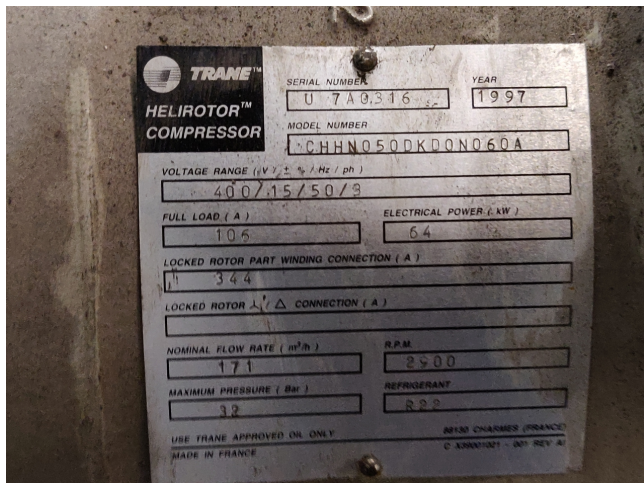
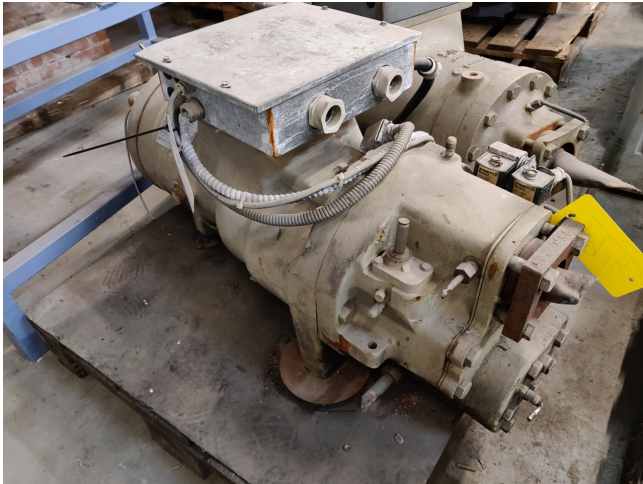
Brand	Trane
Type	CHHN050DKD0N060A
Refrigerant	Freon
Refrigerant type	R 134 A or other types
kW at +10°C/+40°C	127.3
Weight in kg.	350
Stock	4



## Description

### Used Trane CHHN050DKD0N060A

Used Trane CHHN050DKD0N060A semi hermetic scREW compressor Freon refrigeration. Our capacity table is based on the used type of Freon. You can also use this compressor on alternative types of Freon. For all the other specs (if available), see the picture of the manufacturer model plate or the attached pdf file. \*Why choose for HOSBV? We're not only the largest used refrigeration specialist in Europe, but also, we deliver all equipment including an extensive test, warranty and industrial cleaning. \*Optional we can also perform a new paint job and arrange the logistics.







Model number	Starting	Refrigerant	Cooling capacity (KW) (1)	Shipping weight (Kg)	Ordering number
CHIN035	PART WINDING	R134a/R22	85.1	300	COM0422E
CHIN035	STAR/DELTA	R134a/R22	85.1	300	COM0425E
CHIN040	PART WINDING	R134a/R22	100.1	340	COM0423E
CHIN040	STAR/DELTA	R134a/R22	100.1	340	COM0426E
<b>CHIN050</b>	<b>PART WINDING</b>	<b>R134a/R22</b>	<b>127.3</b>	<b>350</b>	<b>COM0424E</b>
CHIN050	STAR/DELTA	R134a/R22	127.3	350	COM0398E
CHIN060	PART WINDING	R134a/R22	150.3	365	COM0427E
CHIN060	STAR/DELTA	R134a/R22	150.3	365	COM0399E
CHIB070	PART WINDING	R134a/R22	187.8	430	COM0419E
CHIB070	STAR/DELTA	R134a/R22	187.8	430	COM0379E
CHIB070	PART WINDING	R134a	135.0	425	COM0553E
CHIB085	PART WINDING	R134a/R22	210.4	500	COM0420E
CHIB085	STAR/DELTA	R134a/R22	210.4	500	COM0380E
CHIB100	PART WINDING	R134a/R22	253.2	530	COM0421E
CHIB100	STAR/DELTA	R134a/R22	253.2	530	COM0381E
CHIB100	PART WINDING	R134a	190.0	515	COM0566E
CHHP N2	-	R134a	360.0	720	COM0680E
CHHP K2	-	R134a	120.0	390	COM0682E
CHHP L1	-	R134a	150.0	425	COM0683E